

# Electric Low Level Order Picker



Model:  
**OPL10G**  
**OPL12G**

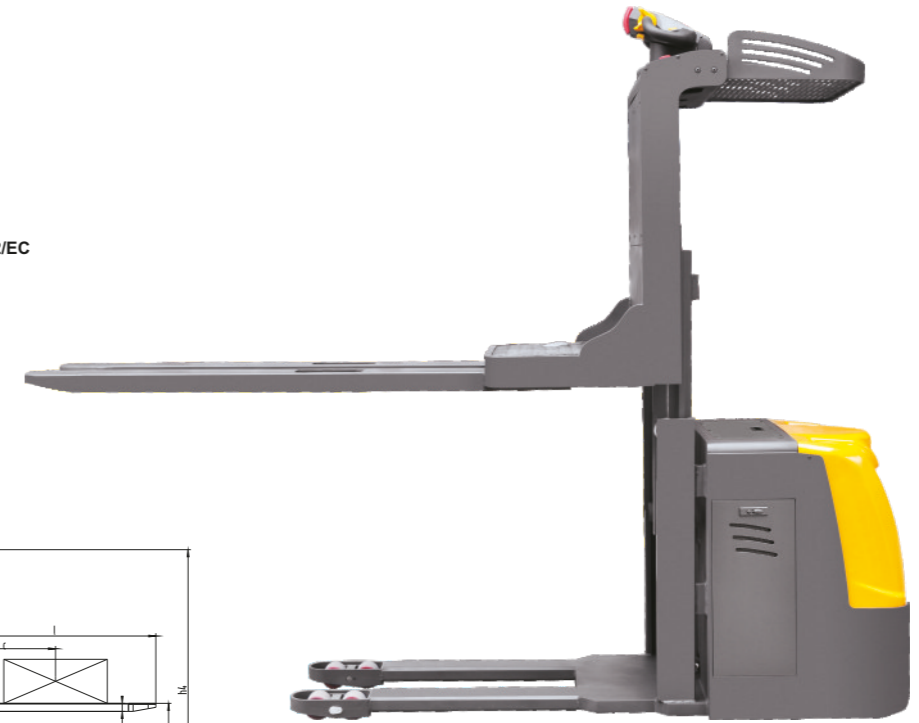
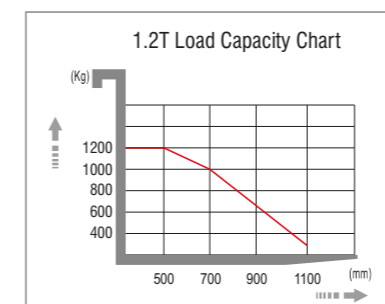
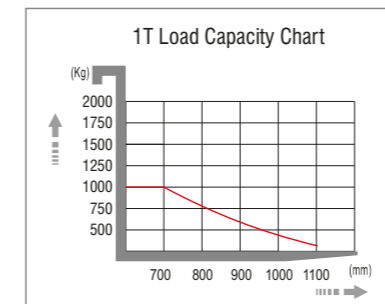
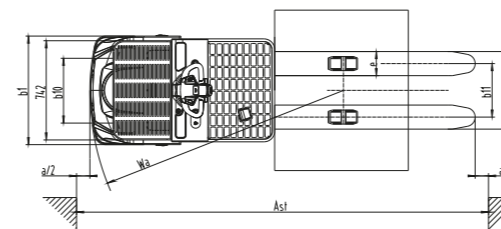
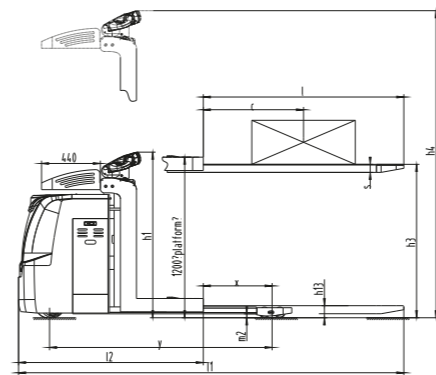


Conforms to EN ISO3691-1  
EN1175-1  
EN16307-1  
Based on Directive 2006/42/EC

**AC**   **EPS**

## Advantages:

- Max. lifting height of platform is 1.2M. It is very convenient to pick up goods. The capacity of storage compartment in front of the operator is 60kg.
- Advanced power steering system (EPS) handle ensures effortless and highly efficient maneuver ability.
- Ergonomic human engineering design provides the convenience and comfort operation.
- Combining of regenerative brake and electromagnetic brake provide safe and reliable brake.
- Side-way battery designs is very convenient for maintenance and replacement.
- Adding the USB charge device on the control panel which could charge the phone, pad and so on.
- Strong powers which allow the travel speed at 7KM/H when loaded. The max. gradeability could reach 10%. Improve the working efficiency and reliability.
- Advanced AC control with reliable performance is easy to maintain. Speed frequency control makes good control performance.
- With small turning radius and stepless speed control ensure the trucks can be used in narrow workplace.
- With reasonable layout of the key components, it is convenient to maintain.



Model	1KG=2.205LB   1INCH=25.40MM	
	OPL10G	OPL12G
Drive type	Battery	Battery
<b>Load capacity/rated load</b>	<b>Q(kg)</b>	<b>1000</b>
Load centre distance	c(mm)	700
Load distance, centre of drive axle to fork	x(mm)	515
Tyre size, front	mm	φ 250x80
Tyre size, rear	mm	φ 80x84
Additional wheel	mm	φ 150x60
Wheels, number front rear (x=driven wheels)		1x+1/4
Height, mast lowered	h <sub>1</sub> (mm)	1275
<b>Max. lift height</b>	<b>h<sub>2</sub>(mm)</b>	<b>1140</b>
Height, mast extended	h <sub>3</sub> (mm)	2335
Lowed height	h <sub>4</sub> (mm)	90
Overall length	l <sub>1</sub> (mm)	2885
Coupling height	l <sub>2</sub> (mm)	1383
Overall width	b <sub>1</sub> (mm)	812
Forks length	s/e/l(mm)	60/180/1500
Width overall forks	b <sub>2</sub> (mm)	580
Wheelbase ground distance	m <sub>1</sub> (mm)	29
Aisle width for pallets 1000x1200 crossways	A <sub>1</sub> (mm)	2904
Aisle width for pallets 800x1200 lengthways	A <sub>2</sub> (mm)	2904
Turning radius	W <sub>1</sub> (mm)	1897
Travel speed, laden/unladen	Km/h	7/7.1
Lift speed, laden/unladen	m/s	0.1/0.14
Lowering speed, laden/unladen	m/s	0.1/0.1
Battery voltage, nominal capacity K5	V/Ah	24/240
Battery dimensions L/w/h	mm	654x440x254
Service weight (with battery)	kg	1195

\* Option: Lithium battery 300AH (Charger 24V/200A)



USB charge device (closed)



USB charge device (open)



Germany Frei Handle



Large metal storage tray for small material storage within 60kg.