

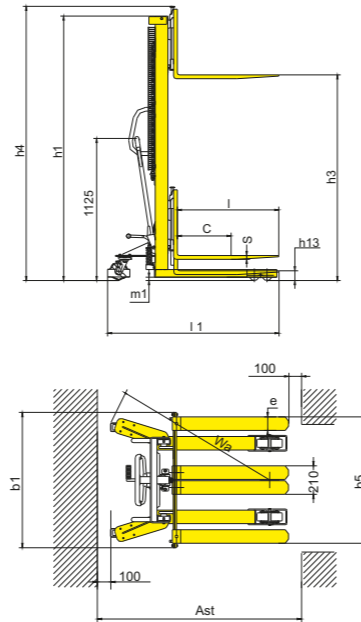
Manual Stacker with Adjustable Forks

Model: SDJA500 SDJA1000 SDJA1500

Forged Forks



- With adjustable forks between 200-950mm.
- Lifting Height from 1600mm to 2500mm.
- High quality steel mast ensures rigidity and durability.
- Adjustable forged forks.
- High efficient pumps makes the control easier to operate.
- Foot and hand controlled lifting function allows the operator to work without having to perform extreme body movements.
- Metal grid protects user from lift chains.
- With safety wheel guard and brake system to ensure safety during operation.



SDJA series with fixed legs adjustable forged forks

1KG=2.205LB 1INCH=25.40MM

Model		SDJA500	SDJA1000	SDJA1500
Load capacity/rated load	Q(kg)	500	1000	1500
Load centre distance	c(mm)	500	500	500
Fork height, lowered	h_a (mm)	90	90	90
Height, mast lowered	h_1 (mm)	2000	2085/1840	2090
Max. lift height	h_2(mm)	1600	1600/2500	1600
Height, mast extended	h_3 (mm)	2010	2165/2925	2150
Overall length	l_1 (mm)	1380/1640	1380/1640	1380/1640
Overall width	b_1 (mm)	805	1000/750	1000
Fork dimensions	s/e/l(mm)	48/100/800(1060)	30/100/800(1060)	30/100/800(1060)
Width overall forks	b_2 (mm)	200~745	200~950/700	200~950
Ground clearance, laden, below mast	m_1 (mm)	20	25	25
Aisle width for pallets 1000x1200 crossways	A_a (mm)	1915	1915	1915
Aisle width for pallets 800x1200 lengthways	A_b (mm)	1910	-	-
Turning radius	W_r (mm)	1235	1235	1235
Lift speed,laden/unladen	mm/time	25	25	21
Lowering speed,laden/unladen	mm/s	Manual control	Manual control	Manual control
Service weight	kg	161	250/316	280

Model: SJJA20E

Forged Forks

- Compact design with strong steel construction.
- High quality steel mast ensures rigidity and durability.
- Adjustable forged forks.
- Screw release allows forks to descend.
- Foot operated lift for raising loads.
- With folded type foot pedal.
- Metal grid protects user from lift chains.
- With safety wheel guard and brake system to ensure safety during operation.

Model: SJJA20E-III

Overall forks



Folded Foot Pedal

SJJA20E series with fixed legs adjustable forks

1KG=2.205LB 1INCH=25.40MM

Model		SJJA20E	SJJA20E-III
Load capacity/rated load	Q(kg)	2000	2000
Load centre distance	c(mm)	400	400
Fork height, lowered	h_a (mm)	90	90
Height, mast lowered	h_1 (mm)	2085	2085
Max. lift height	h_2(mm)	1500	1500
Height, mast extended	h_3 (mm)	2085	2085
Overall length	l_1 (mm)	1410	1516
Overall width	b_1 (mm)	1000	830
Fork dimensions	s/e/l(mm)	30/120/900	60/166/900
Width overall forks	b_2 (mm)	250~950	350-710
Round clearance, laden,below mast	m_1 (mm)	25	20
Aisle width for pallets 1000x1200 crossways	A_a (mm)	2050	2166
Aisle width for pallets 800x1200 lengthways	A_b (mm)	2040	-
Turning radius	W_r (mm)	1250	1250
Lift speed,laden/unladen	mm/time	18/20	18/20
Lowering speed,laden/unladen	mm/s	Manual control	Manual control
Service weight	kg	292	260

