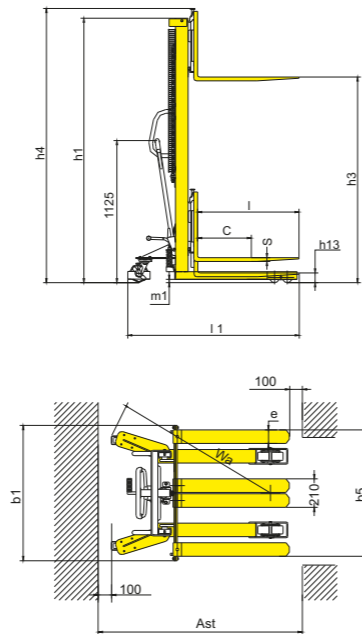


Manual Stacker with Adjustable Forks

Model: SDJA-I (1000~1500kg)



- With adjustable forks between 295/310mm to 930mm.
- Shaft type forks help to control adjustment better.
- High quality steel mast and strong steel construction ensures rigidity and durability.
- Welded forks deliver low-cost solution.
- High efficient pumps makes the control easier to operate.
- Foot and hand controlled lifting function allows the operator to work without having to perform extreme body movements.
- Metal grid protects user from lift chains.
- With safety wheel guard and brake system to ensure safety during operation.



SDJA series with fixed legs and adjustable forks

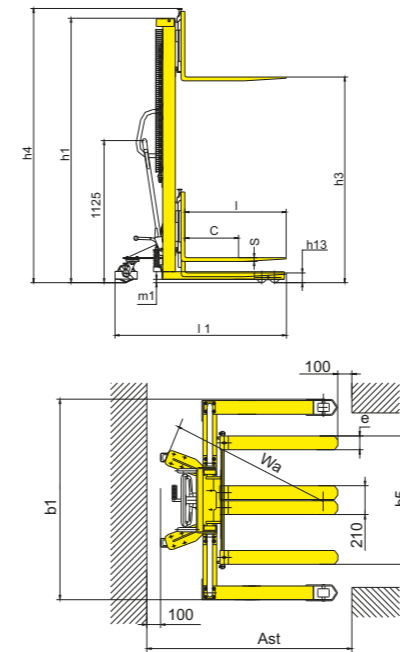
1KG=2.205LB 1INCH=25.40MM

Model		SDJA1000- I	SDJA1500- I
Load capacity/rated load	Q(kg)	1000	1500
Load centre distance	c(mm)	500	500
Fork height, lowered	h_3 (mm)	90	90
Height, mast lowered	h_1 (mm)	2090/1840	2090
Max. lift height	h_2 (mm)	1600/2500	1600
Height, mast extended	h_4 (mm)	2090/2925	2090
Overall length	l_1 (mm)	1680	1680
Overall width	b_1 (mm)	955	955
Fork dimensions	s/e/l(mm)	60/142/1070(1150)	60/154/1070(1150)
Width overall forks	b_5 (mm)	295~930	310~930
Ground clearance, laden, below mast	m_1 (mm)	25	25
Aisle width for pallets 1000x1200 crossways	A_a (mm)	2146	2146
Aisle width for pallets 800x1200 lengthways	A_s (mm)	2141	2141
Turning radius	W_s (mm)	1235	1235
Lift speed,laden/unladen	mm/time	25	21
Lowering speed,laden/unladen	mm/s	Manual control	Manual control
Service weight	kg	250/322	270

Manual Stacker with Straddle Legs

Model: SDJAS500 SDJAS1000

- Straddle legs width reach 1300mm(500kg)and1250mm(1000kgs).
- Lifting Height from 1500-1600mm.
- With adjustable forged forks.
- High quality steel mast ensures rigidity and durability.
- High efficient pumps makes the control easier to operate.
- Foot and hand controlled lifting function allows the operator to work without having to perform extreme body movements.
- Metal grid protects user from lift chains.
- With safety wheel guard and brake system to ensure safety during operation.



SDJAS series with Straddle legs and adjustable forks

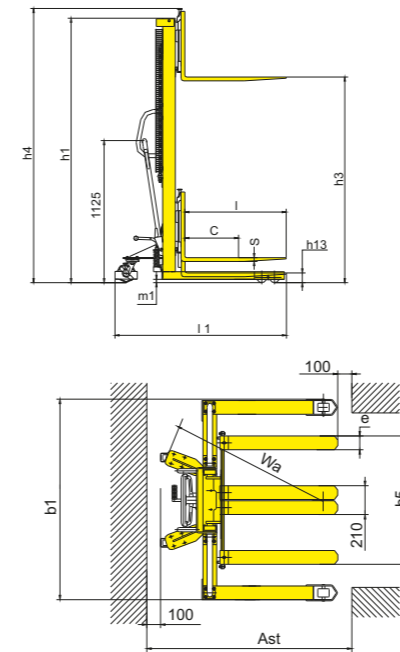
1KG=2.205LB 1INCH=25.40MM

Model		SDJAS500	SDJAS1000
Load capacity/rated load	Q(kg)	500	1000
Load centre distance	c(mm)	500	500
Fork height, lowered	h_3 (mm)	70	70
Height, mast lowered	h_1 (mm)	2000	2050
Max. lift height	h_2 (mm)	1600	1600
Height, mast extended	h_4 (mm)	2100	2155
Overall length	l_1 (mm)	1340/1600	1300/1560
Overall width	b_1 (mm)	1525	1475
Fork dimensions	s/e/l(mm)	48/100/800(1060)	30/100/800(1060)
Width overall forks	b_5 (mm)	745	950
Round clearance, laden,below mast	m_1 (mm)	25	25
Aisle width for pallets 1000x1200 crossways	A_a (mm)	1975	1975
Aisle width for pallets 800x1200 lengthways	A_s (mm)	1915	1915
Turning radius	W_s (mm)	1200	1200
Lift speed,laden/unladen	mm/time	25	25
Lowering speed,laden/unladen	mm/s	Manual control	Manual control
Service weight	kg	223	294



Model: SDJAS500 SDJAS1000

- Straddle legs width reach 1300mm(500kg)and1250mm(1000kgs).
- Lifting Height from 1500-1600mm.
- With adjustable forged forks.
- High quality steel mast ensures rigidity and durability.
- High efficient pumps makes the control easier to operate.
- Foot and hand controlled lifting function allows the operator to work without having to perform extreme body movements.
- Metal grid protects user from lift chains.
- With safety wheel guard and brake system to ensure safety during operation.



SDJAS series with Straddle legs and adjustable forks

1KG=2.205LB 1INCH=25.40MM

Model		SDJAS500	SDJAS1000
Load capacity/rated load	Q(kg)	500	1000
Load centre distance	c(mm)	500	500
Fork height, lowered	h_3 (mm)	70	70
Height, mast lowered	h_1 (mm)	2000	2050
Max. lift height	h_2 (mm)	1600	1600
Height, mast extended	h_4 (mm)	2100	2155
Overall length	l_1 (mm)	1340/1600	1300/1560
Overall width	b_1 (mm)	1525	1475
Fork dimensions	s/e/l(mm)	48/100/800(1060)	30/100/800(1060)
Width overall forks	b_5 (mm)	745	950
Round clearance, laden,below mast	m_1 (mm)	25	25
Aisle width for pallets 1000x1200 crossways	A_a (mm)	1975	1975
Aisle width for pallets 800x1200 lengthways	A_s (mm)	1915	1915
Turning radius	W_s (mm)	1200	1200
Lift speed,laden/unladen	mm/time	25	25
Lowering speed,laden/unladen	mm/s	Manual control	Manual control
Service weight	kg	223	294