

# Double Scissors Lift Table



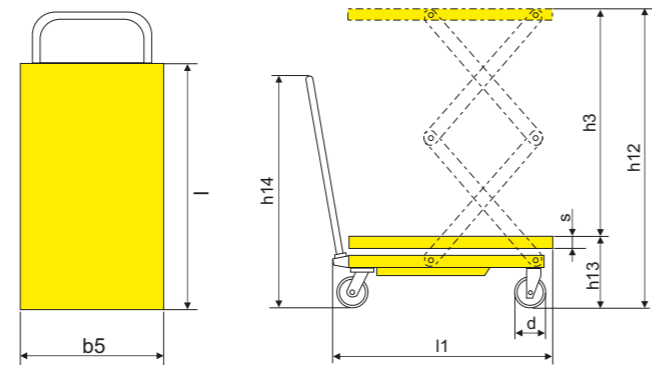
Model: **SPS150**  
**SPS350**



Model: **SPF680**



Model: **SPS800**



Conforms to EN 1570-1  
Based on Directive 2006/42/EC

1KG=2.205LB 1INCH=25.40MM

Model		SPS150	SPS350	SPS800	SPF680	SPT500/SPTJ500
Capacity	kg	150	350	800	680	500
Max. lift height	$h_{12}$ (mm)	1100	1300	1500	1500	900
Min. height of table	$h_{13}$ (mm)	302	350	475	474	310
Lifting height	$h_3$ (mm)	798	950	1025	1026	590
Table size	$l \times b \times s$ (mm)	700x450x35	910x500x50	1220x610x60	1220x610x55	1600x800x50
Total height	$h_{12}$ (mm)	921	970	962	1038	970
Overall length	$l_1$ (mm)	773	980	1375	1289	1670
Foot pedal cycles to max height		≤30	≤60	≤70	35/80	≤55
Wheel diameter	$d$ (mm)	100	127	150	150	127
Qty. / 20' Container	PCS	168	110	48	44	30
Service weight	kg	64	105	172	185	136
Carton size	mm	800x480x330	1010x530x390	1400x730x500	1320x630x480	1700x810x330

# Extra Large Plate Lift Table



Model: **SPT500**  
• Lower controlled by hand

## Electric Table Truck



Model: **DP30**  
**DP50**

Model		DP30	DP50	DPS35
Capacity	kg	300	500	350
Max. lift height	$h_{12}$ (mm)	900	900	1320
Min. height of table	$h_{13}$ (mm)	300	300	405
Lifting height	$h_3$ (mm)	600	600	915
Table size	$l \times b \times s$ (mm)	815x500x50	815x500x50	910x500x56
Total height	$h_{12}$ (mm)	1101	1101	1101
Wheel diameter	$d$	127	127	127
Motor power	kw	0.8	0.8	0.8
Lifting speed	S	≤10	≤10	≤15
Lowering speed	S	10	10	15
Battery voltage, nominal capacity $K_s$	V/Ah	24V/33Ah	24V/33Ah	24V/33Ah
Qty. / 20' Container	PCS	20	20	20
Service weight	kg	111	114	150
Carton size	mm	1125x540x340	1125x540x340	1240x540x450

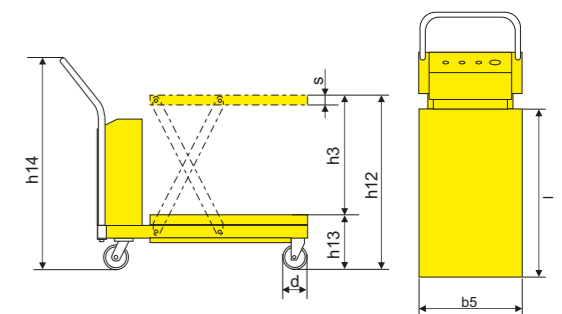


## Stainless steel Lift Table

- Capacity : 150kg /300kg/500kg/350kg
- Option (1) Stainless table only
- (2) Stainless Steel - table, handle, caster rigs and hardware.



Model: **DPS35**



Electric Pallet Truck

Electric Stackers

Order Picker

Narrow Aisle Truck

Electric Tow Tractor

Hand Pallet Truck

Manual Stacker

Lift Table