

# Electric High Level Order Picker

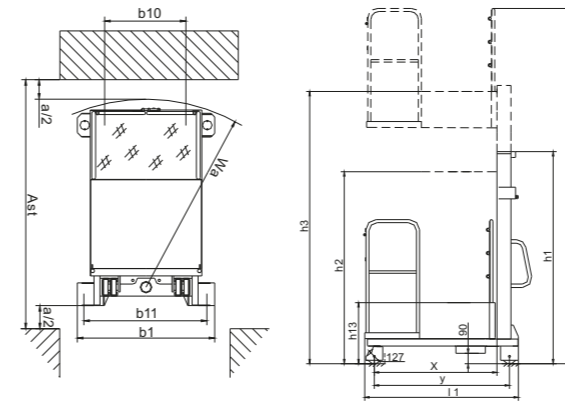
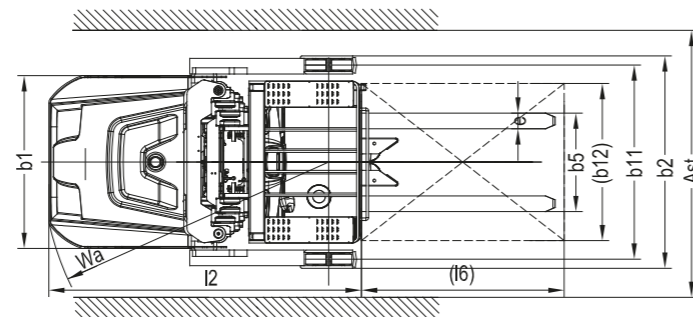
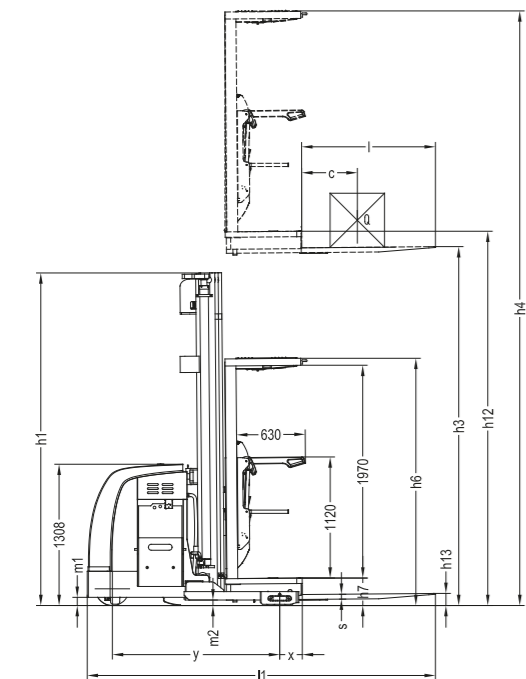
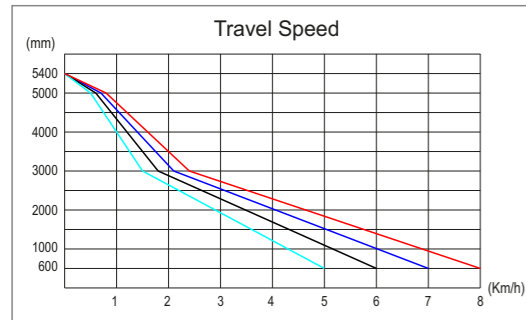
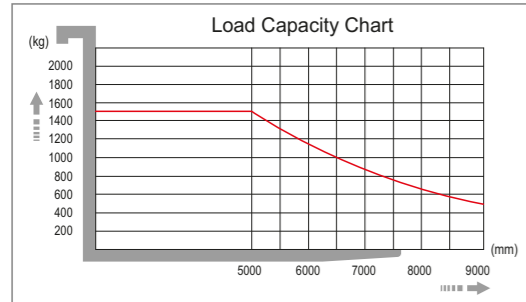
# Electric Order Picker



1KG=2.205LB 1INCH=25.40MM

Model	OPS15	
Drive type	Battery	
<b>Load capacity/rated load</b>	<b>Q(kg)</b>	<b>1500</b>
Load centre distance	c(mm)	600
Load distance, centre of drive axle to fork	x(mm)	206
Tyre size, front	mm	φ 310x125
Tyre size, rear	mm	φ 128x73
Additional wheel	mm	φ 150x47
Wheels, number front rear (x=driven wheels)	1x+2/4	
Height, mast lowered	h <sub>1</sub> (mm)	2410/3080/3750
<b>Max. lift height</b>	<b>h<sub>2</sub>(mm)</b>	<b>5000/7000/9000</b>
Height, mast extended	h <sub>3</sub> (mm)	7230/9230/11230
Height of platform	h <sub>4</sub> (mm)	230
Lowest height	h <sub>5</sub> (mm)	80
Overall length	l <sub>1</sub> (mm)	3200
Coupling height	l <sub>2</sub> (mm)	1975
Overall width	b <sub>1</sub> /b <sub>2</sub> (mm)	1100/1352
Forks length	s/e/l(mm)	45/100/1220
Width overall forks	b <sub>3</sub> (mm)	530/715
Height of overhead guard	h <sub>6</sub> (mm)	2290
Aisle width for pallets 1000x1200 crossways	A <sub>1</sub> (mm)	1400
Aisle width for pallets 800x1200 lengthways	A <sub>2</sub> (mm)	1400
Turning radius	W <sub>1</sub> (mm)	1800
Travel speed, laden/unladen	Km/h	7.7/8
Lift speed, laden/unladen	m/s	0-0.15/0-0.28
Lowering speed, laden/unladen	m/s	0-0.28/0-0.3
Battery voltage, nominal capacity K5	V/Ah	24/770(1100)
Battery weight	kg	610(850)
Battery dimensions L/w/h	mm	982x397x561
Service weight (with battery)	kg	3870

\* Option: OPS15 for 5-7M Lithium battery 500AH (Charger 24V/200A)  
OPS15 for 9M Lithium battery 750AH (Charger 24V/200A)



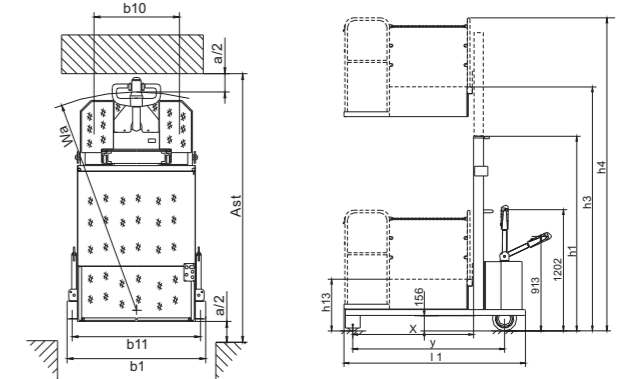
## Semi-electric Order Picker

1KG=2.205LB 1INCH=25.40MM

MODEL	STD04/35, STD04/40, STD04/45	
Capacity	Q(kg)	400
Load distance, centre of drive axle to fork	x(mm)	1052
Lowered fork height	h <sub>10</sub> (mm)	524
Wheelbase	y(mm)	1160
Tread, front	b <sub>10</sub> (mm)	522
Tread, rear	b <sub>11</sub> (mm)	868
Height, mast lowered	h <sub>1</sub> (mm)	2250/2500/2750
Max. lift height	h <sub>2</sub> (mm)	3500/4000/4500
Height, mast extended	h <sub>3</sub> (mm)	4212/4712/5212
Overall length	l <sub>1</sub> (mm)	1520
Overall width	b <sub>1</sub> (mm)	1174
Aisle width for pallets 1000x1200 crossways	A <sub>1</sub> (mm)	1760
Turning radius	W <sub>1</sub> (mm)	1460
Lift speed, laden/unladen	m/s	0.08/0.1
Lowering speed, laden/unladen	m/s	0.14/0.12
Lift motor rating at S3 15%	kW	1.5
Battery voltage, nominal capacity K5	V/Ah	12/200
Battery weight	kg	60
Battery dimensions l/w/h	mm	250x190x295
Service weight (with battery)	kg	420/450/480

## Advantages:

- Large working area.
- Solid slip resistant floor.
- Self-locking gate provides the maximum safety for aerial working.



## Self-propelled Order Picker

1KG=2.205LB 1INCH=25.40MM

MODEL	SDD04/35, SDD04/40, SDD04/45	
Capacity	Q(kg)	400
Load distance, centre of drive axle to fork	x(mm)	1247
Lowered fork height	h <sub>10</sub> (mm)	534
Wheelbase	y(mm)	1568
Tread, front	b <sub>10</sub> (mm)	730
Tread, rear	b <sub>11</sub> (mm)	1118
Height, mast lowered	h <sub>1</sub> (mm)	2250/2500/2750
Max. lift height	h <sub>2</sub> (mm)	3500/4000/4500
Height, mast extended	h <sub>3</sub> (mm)	4222/4722/5222
Overall length	l <sub>1</sub> (mm)	1860
Overall width	b <sub>1</sub> (mm)	1174
Aisle width for pallets 1000x1200 crossways	A <sub>1</sub> (mm)	2621
Turning radius	W <sub>1</sub> (mm)	1830
Travel speed, laden/unladen	Km/h	4.5/6
Lift speed, laden/unladen	m/s	0.09/0.1
Lowering speed, laden/unladen	m/s	0.14/0.12
Gradeability, laden/unladen	%	5/10
Drive motor rating S2 60 min	kW	0.75
Lift motor rating at S3 15%	kW	1.5
Battery voltage, nominal capacity K5	V/Ah	24/200
Battery weight	kg	120
Battery dimensions l/w/h	mm	250x190x295
Service weight (with battery)	kg	710/770/830